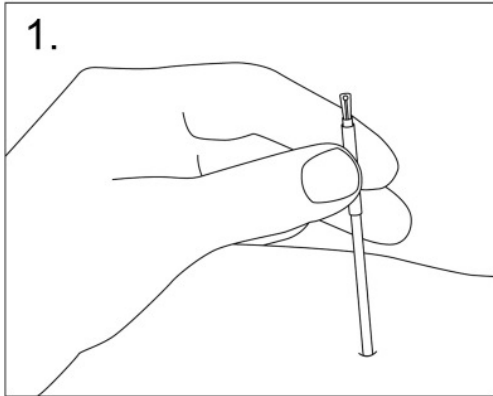
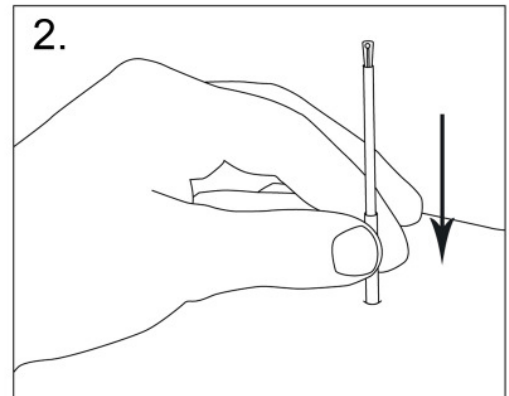


# Safe-T-Sleeve™

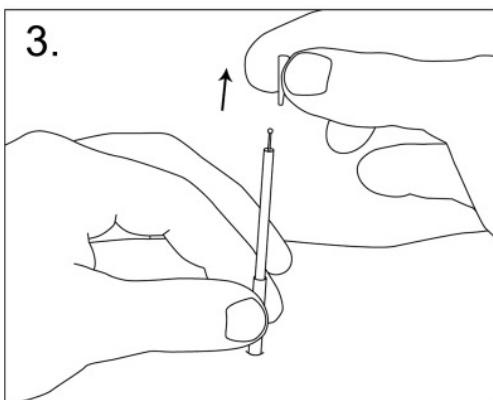
PATENT PENDING



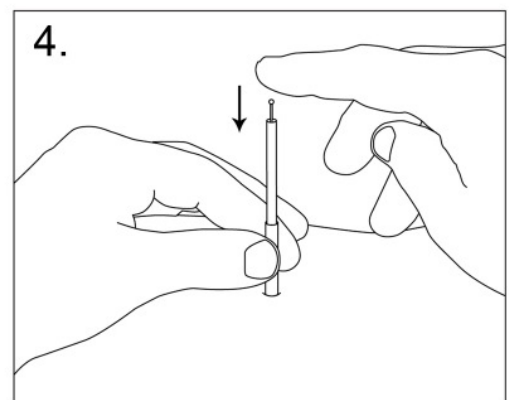
*Place needle on point*



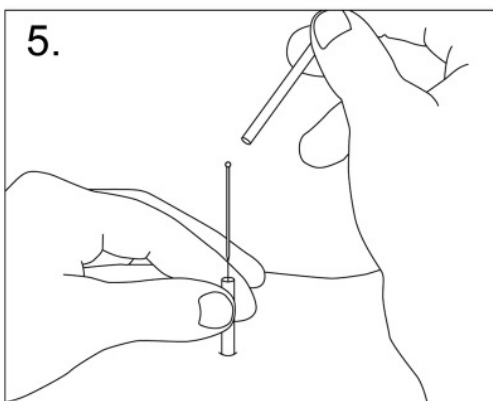
*Slide sleeve to top of skin*



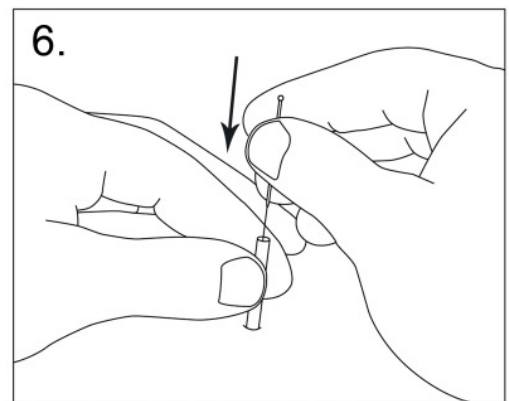
*Remove plastic retainer*



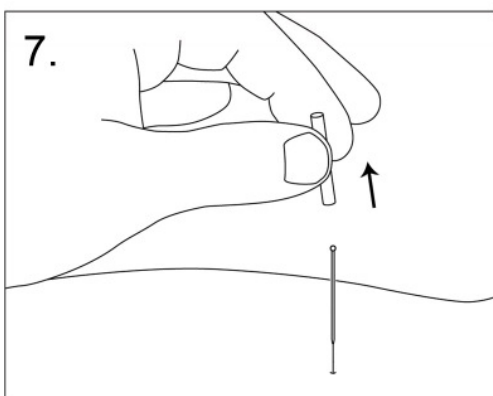
*Tap acupuncture needle into dermis*



*Hold Safe-T-Sleeve with one hand, remove the insertion tube with the other*



*Insert needle to target depth*



*If desired remove Safe-T-Sleeve*

**Maximizes patient comfort**

**Ensures 100% adherence to Clean Needle Technique**