

**asia-med Gesellschaft für
Akupunkturbedarf mbH & Co. KG**

Schuetzenstrasse 22
98527 Suhl
Germany

Tel +49 89 747315 0
Fax +49 89 747315 40
Email info@asiamed.com

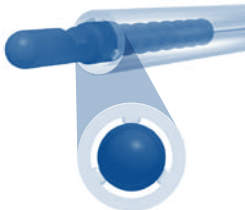
www.asiamed.com

asiamed
the art of gentle healing

Just remove – Place 'N Press

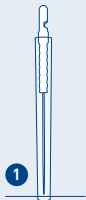
The new tube technology

easy to use

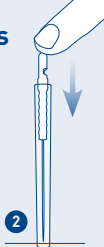


asiamed
the art of gentle healing

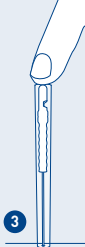
Place 'N Press



Place needle
on point



Place finger tip
on handle



Increase pressure
on handle until
needle injects



Remove tube,
continue insertion
to desired depth

The standard two step needle release procedures of breaking the glue spot with a twist or removing the plastic retainer is now replaced with a **specialty molded handle and tube technology** (patent pending).

To use – just place the needle on the point, place your finger tip on the plastic handle, increase pressure until you feel the needle injects and your finger tip is at the top of the tube.

Remove tube and continue insertion to the required depth. **It's that simple!**